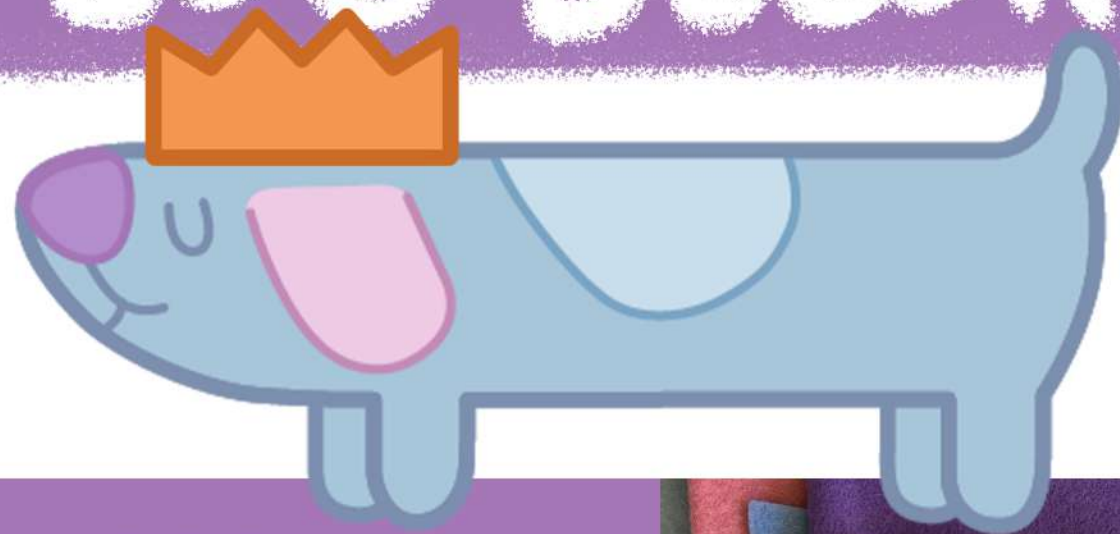


MAKE YOUR OWN LONG DOG DECORATION



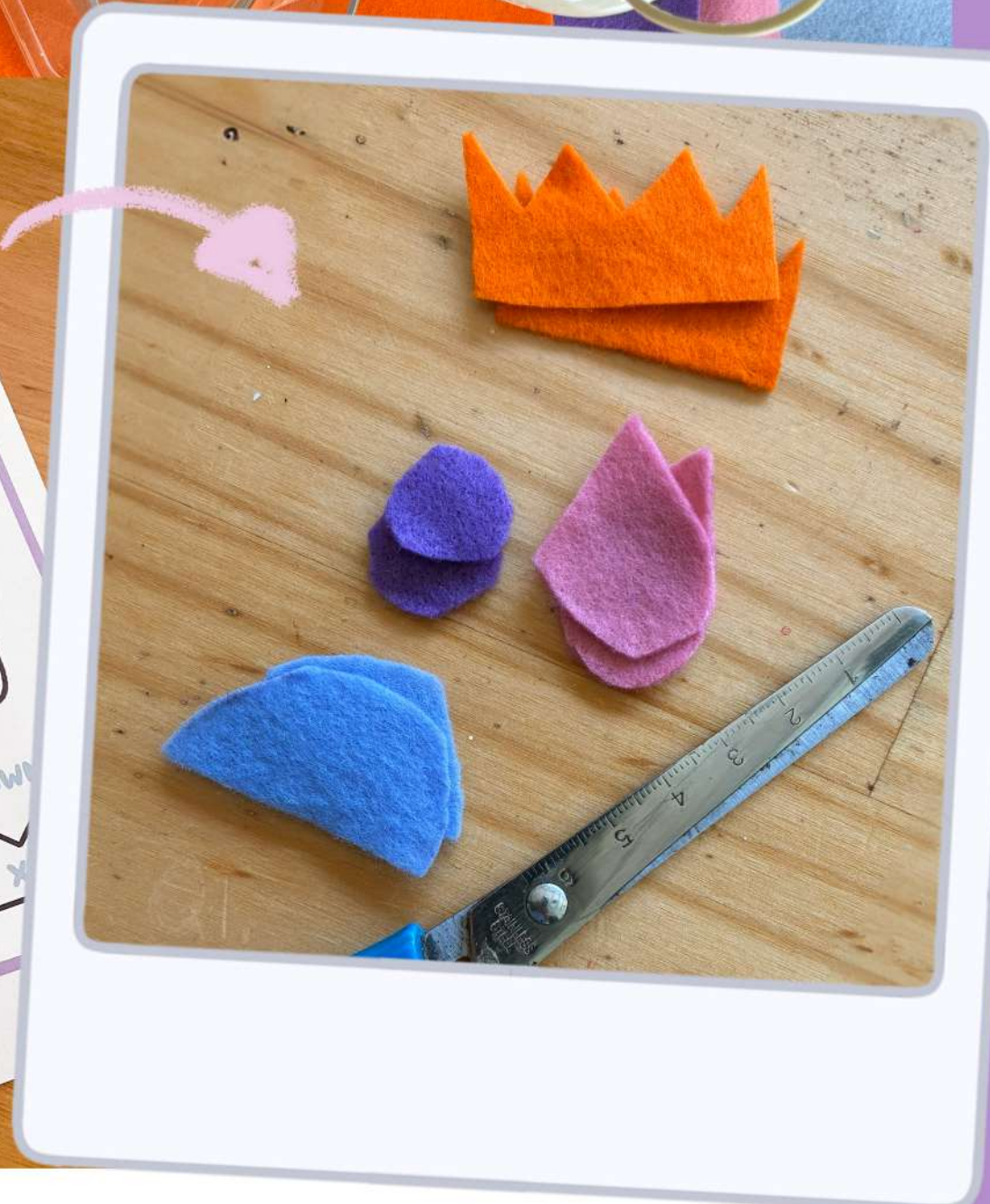
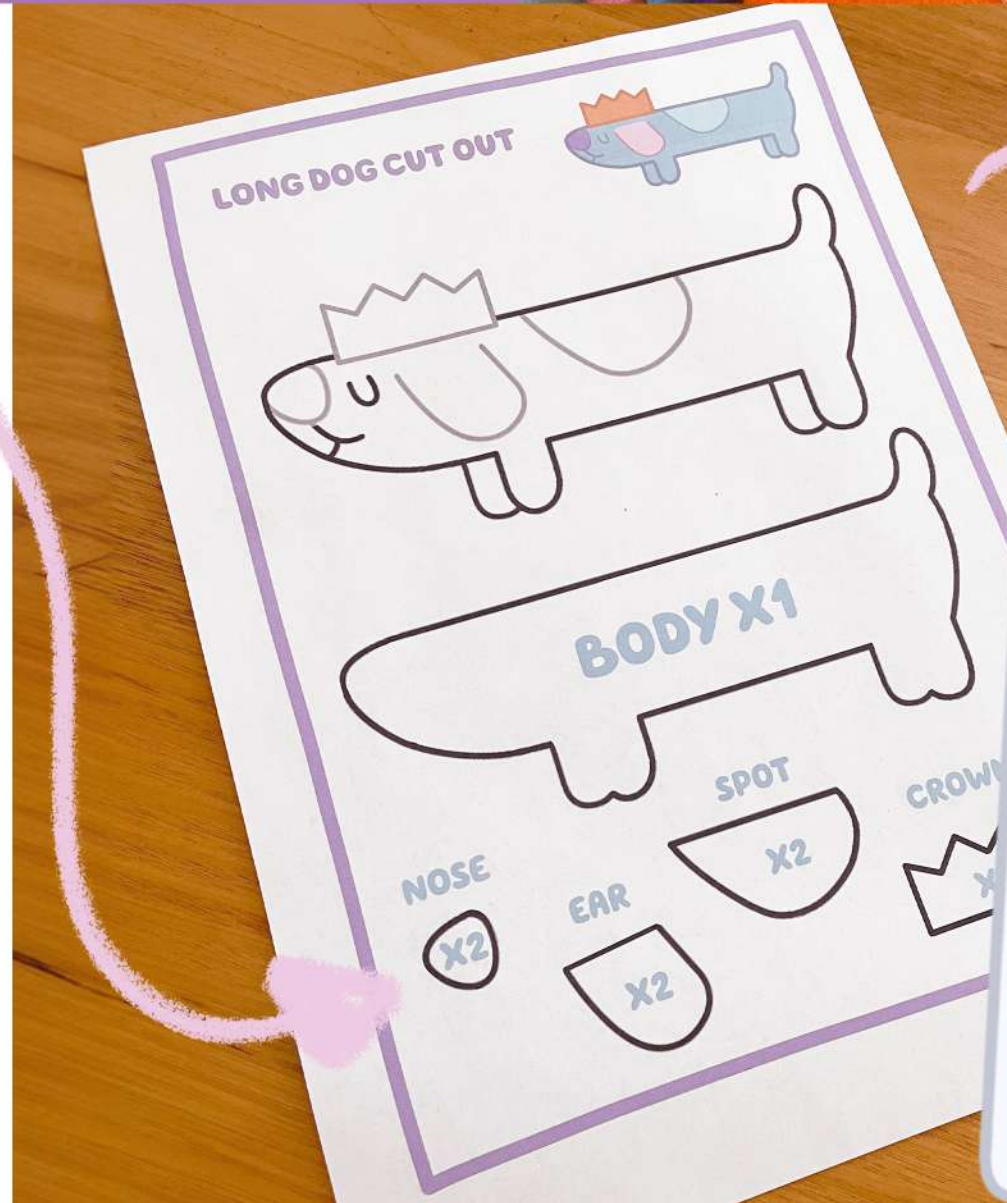
WHAT YOU'LL need:

- Coloured Felt
- 25cm String
- Template Printout
- PVA glue
- Scissors
- Paint brush
- Plastic Lid
- Water



1.

Print and cut out your Long Dog template and use this to cut your felt pieces making sure to do 2 of each except the Long Dog body.



2.

Make a mixture of 3 parts glue to 1 part water and soak your main Long Dog piece in it. Let it dry overnight or until it is dry and stiff like card.





3.

Arrange your pieces on one side, glue them down and sandwich the end of your string between the back spot and the Long Dog body.

FLIP!



4.

Then flip over and sandwich the other end of the string with the other spot. This should create a loop. Then glue the other pieces on this side.

5.

Put your Long Dog under a heavy book and leave overnight.



IN THE MORNING YOU SHOULD HAVE A CHRISTMASSY LONG DOG FOR YOUR TREE!

