

# BLUEY



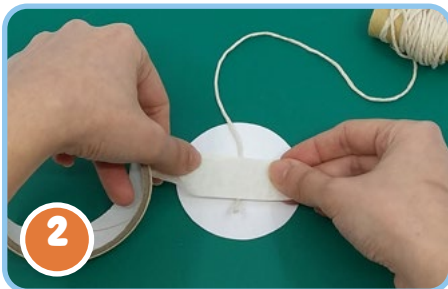
## SLEEPYTIME SOLAR SYSTEM MOBILE

### You will need:

- BBQ sticks
- Twine/ Yarn
- Scissors
- Masking tape
- Glue



1. Ask a grown-up to help you cut out all the pieces from the template provided.



2. Lay the planets printed side down and secure the twine in the middle of the circle with masking tape.



3. Then glue the second planet on the back to hide the tape. Repeat steps 2 and 3 with all other planets.



4. Join two BBQ sticks using a piece of twine to form an "X". Be sure to cut off any pointed ends on the sticks



5. Tie Bingo twine to the centre of the "X". Then attach all the planets at different levels and placements.



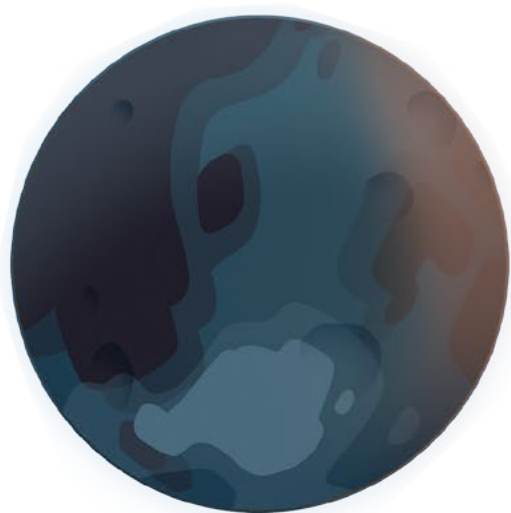
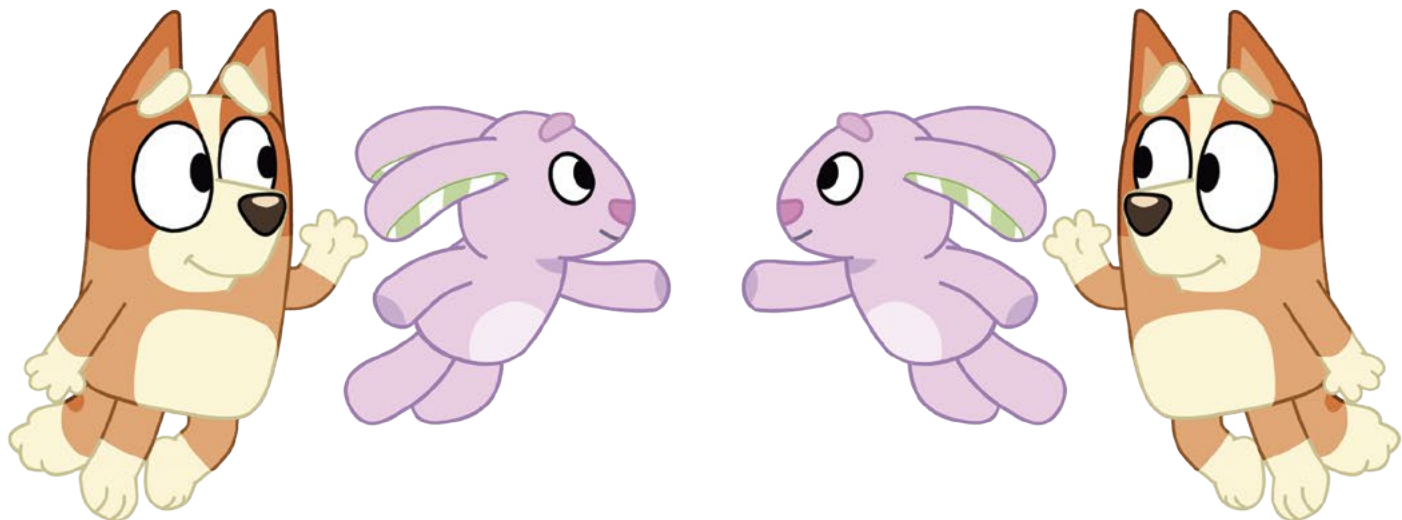
6. To finish, attach twine to the ends of each stick to hang the solar system mobile.

Sleepytime with Bingo!

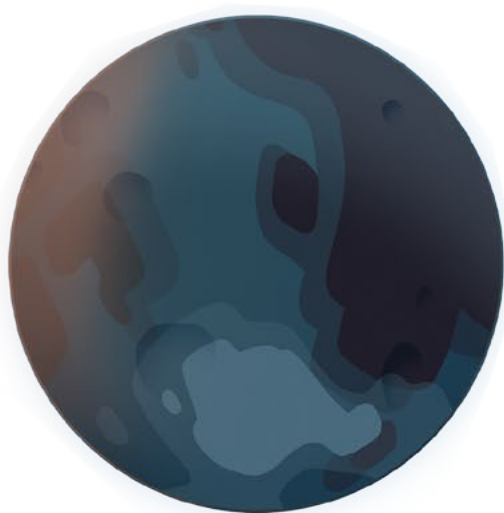
Discover more fun at [www.bluey.tv](http://www.bluey.tv)



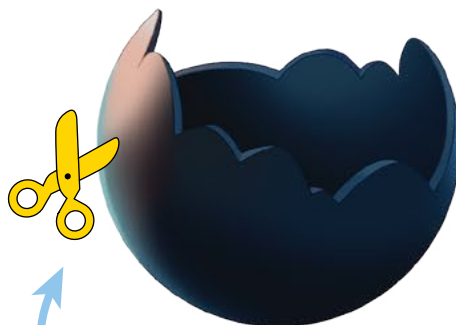
# SOLAR SYSTEM MOBILE



PLUTO



VENUS



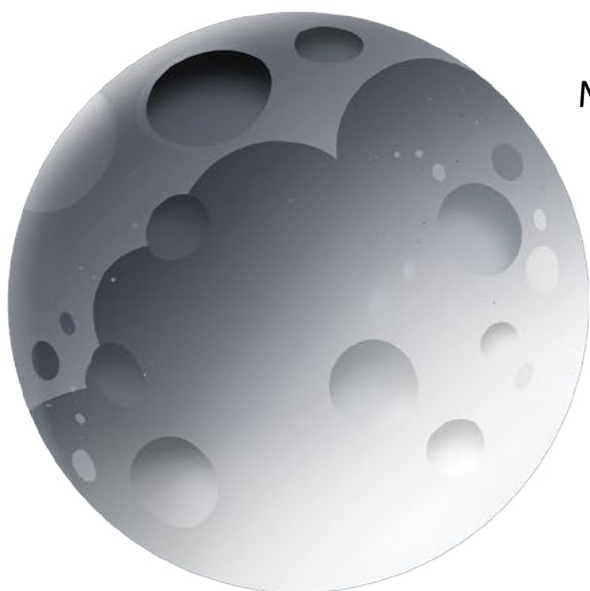
Ask a grown-up to help you cut out each element.



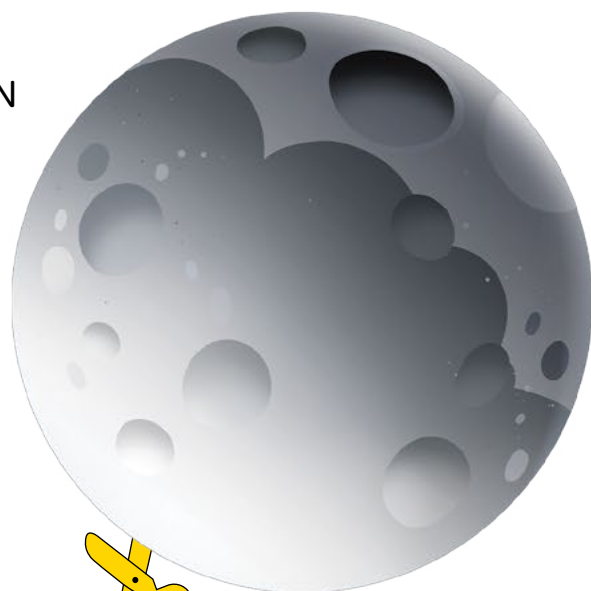
# SOLAR SYSTEM MOBILE



EARTH



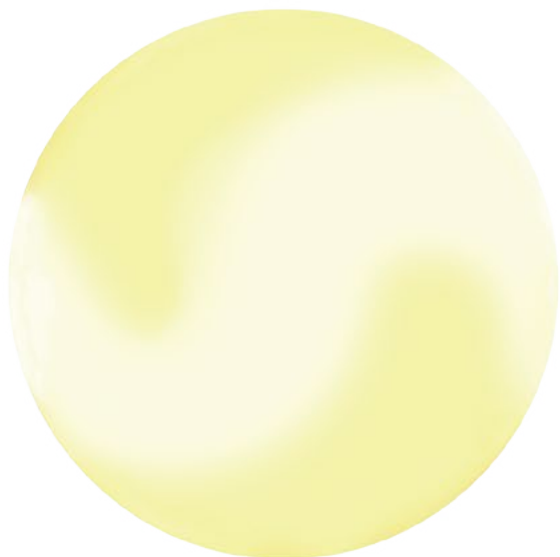
MOON



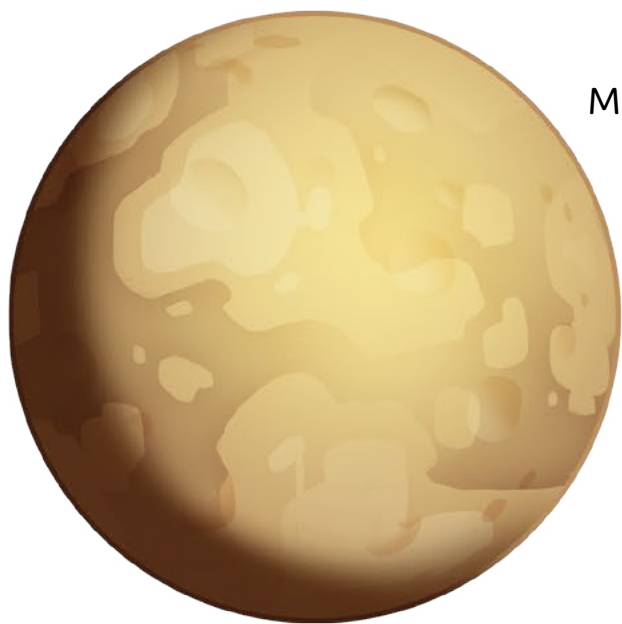
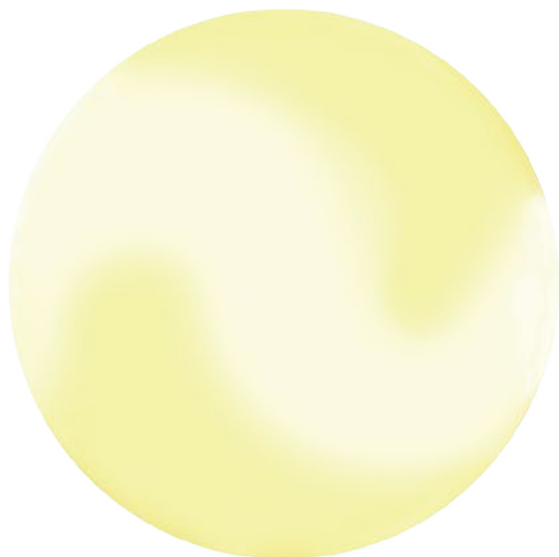
Ask a grown-up to help you cut out each element.



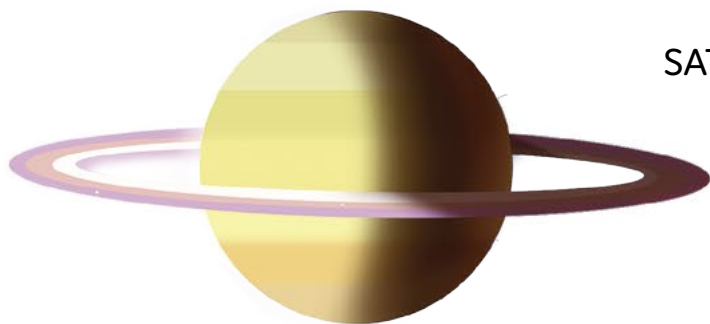
# SOLAR SYSTEM MOBILE



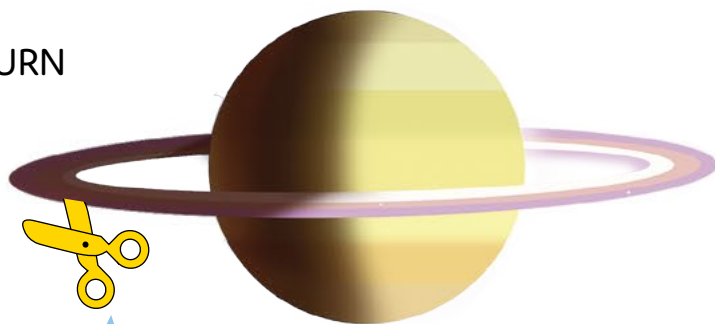
SUN



MERCURY



SATURN

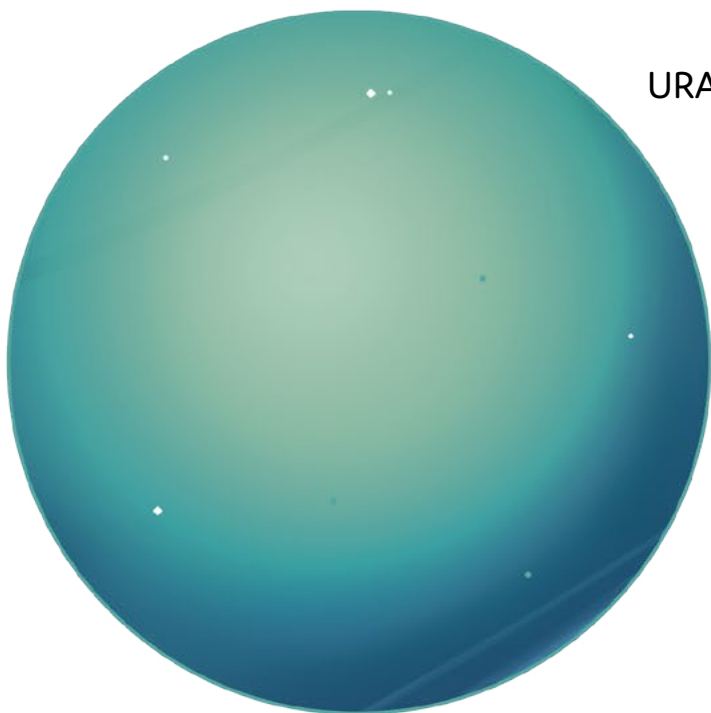


Ask a grown-up to help you cut out each element.

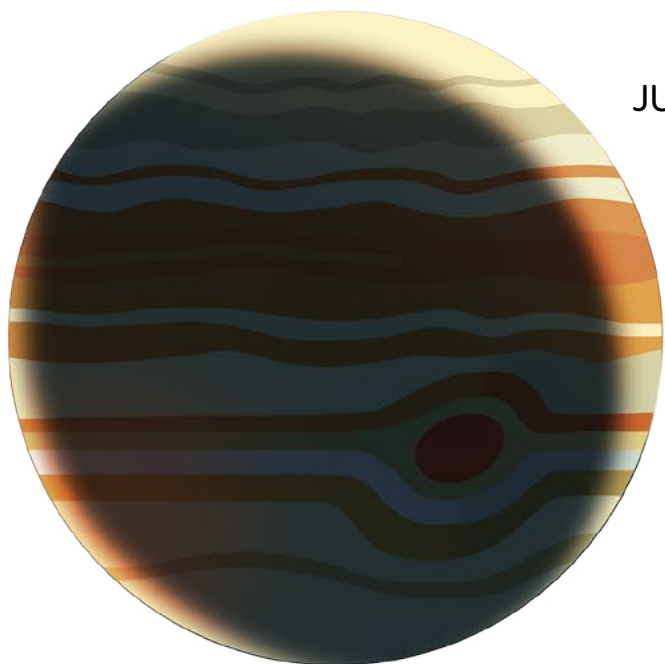
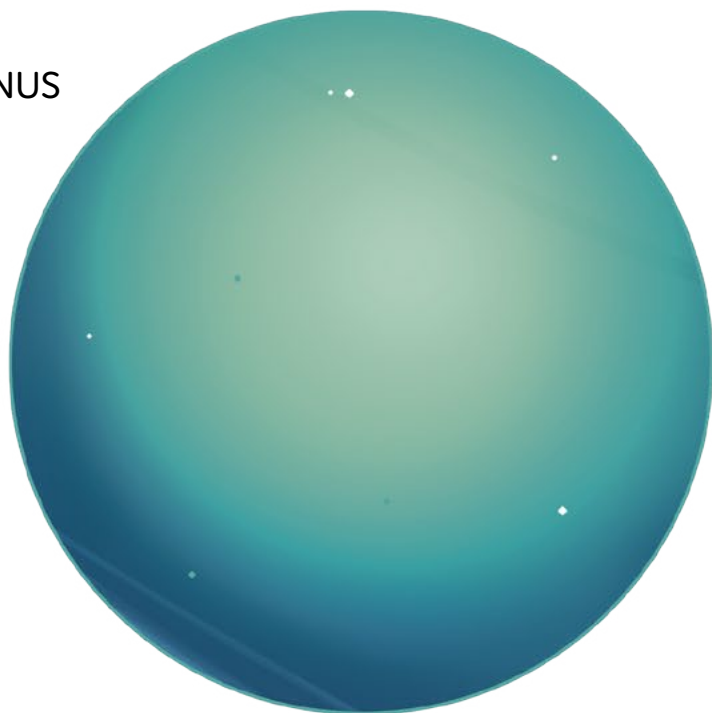
Discover more fun at [www.bluey.tv](http://www.bluey.tv)



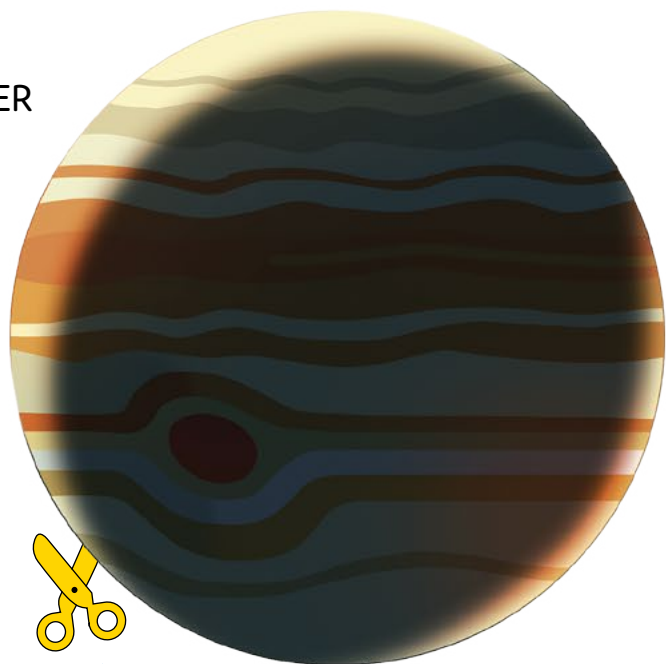
# SOLAR SYSTEM MOBILE



URANUS



JUPITER



Ask a grown-up to help you cut out each element.